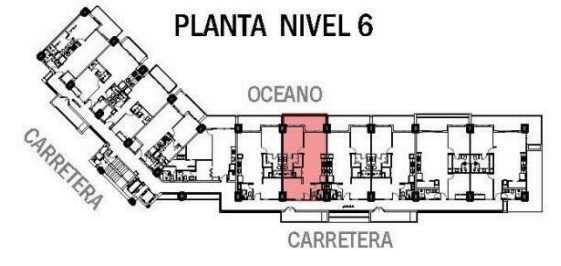
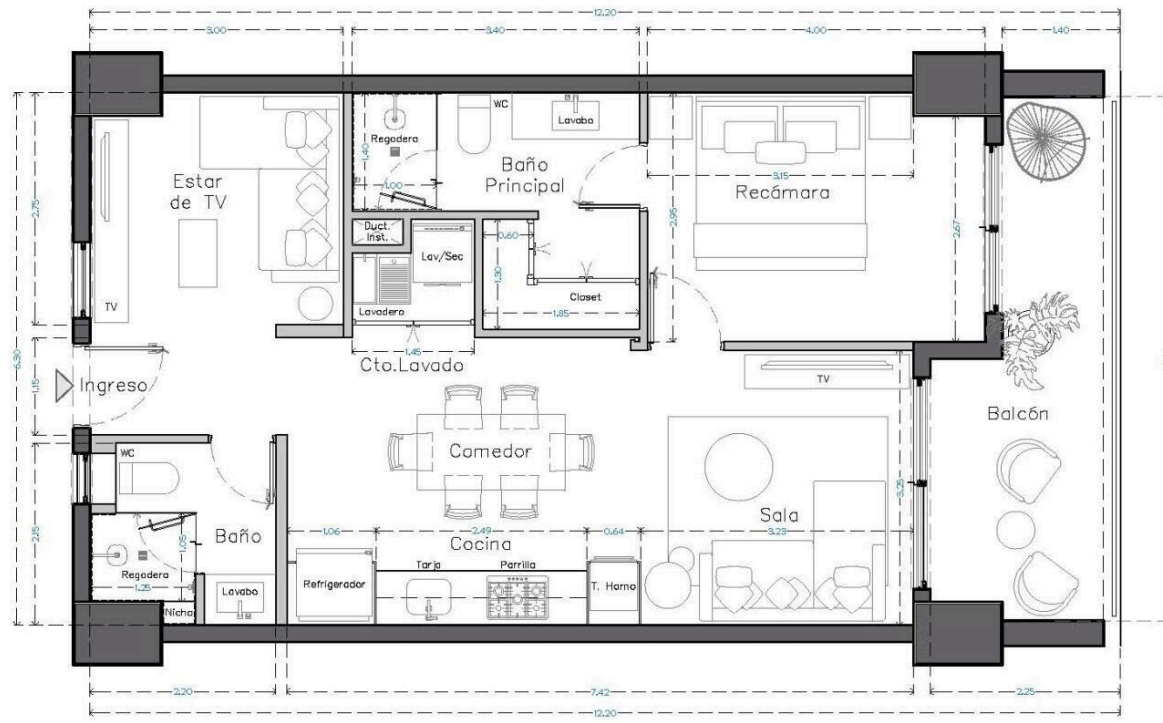
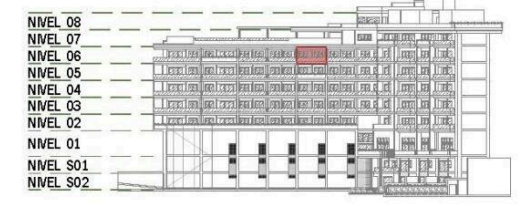


U-607 SUPERFICIES

M2 INTERIORES : 69.05
M2 EXTERIORES : 11.54
M2 TOTALES : 80.59



FACHADA NORTE (OCEANO)



FACHADA DESDE CARRETERA



ESCALA:

South Bay 607

\$633,336.00 USD

South Bay | 65 # Units in Develop | Emiliano Zapata
Centro South, Puerto Vallarta
MLS ID: 39691

General Information

Total m2:	80	Total M2 const:	80.59
Total SqFt:	867.14	Walls:	Concrete,Sheetrock
Price/Sq Meter:	7,858.74	Total Bedrooms:	1
Total Baths:	2	Full baths:	2
Floor Number:	Nivel 6	Primary View:	Ocean
Secondary View:	City	Furnished:	Unfurnished
Pet Friendly:	Yes	Parking:	Parking on Property
Location:	City		

Features & Amenities

Common Amenities

24 Hours Security:		Elevator:	
Fire Pit:		Garden:	
Gym:		Intercom:	
Jacuzzi:		Pool:	

Appliances

Hood/Vent:		Refrigerator/Freezer:	
Oven:	Electric	Cook Top:	Electric

Devices

Air Conditioning:	Mini-Split		
-------------------	------------	--	--

Hoa Info

Hoa Name:		Dues per month (\$MX):	8,583.00
24-hr Security:		Building Insurance:	
Common Area Electric:		Common Area Maintenance:	
Garden Maintenance:		Gym:	
On-Site Admin:		Pool Maintenance:	

Especifications

Days On Market	304	Pre-Construction	Yes
Est. Delivery Date	2027-02-10	Construction Manifest	No
Title	Escritura,Fideicomiso	Electricity	CFE
Water	City	Sewage	City
Road Type	Paved		