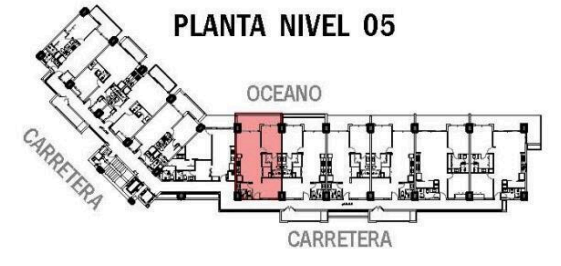
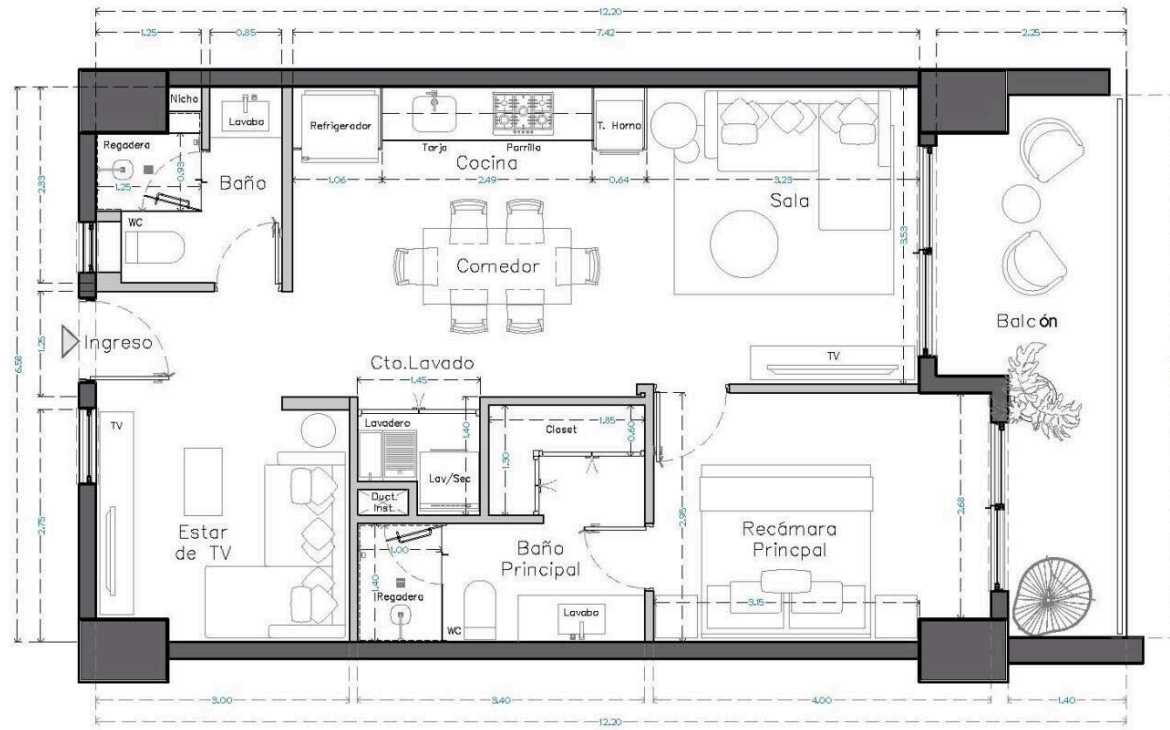
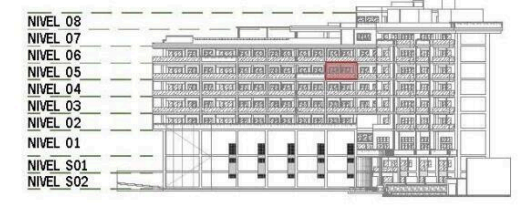


## U-506 SUPERFICIES

M2 INTERIORES : 72.05  
M2 EXTERIORES : 11.88  
M2 TOTALES : 83.93



FACHADA NORTE (OCEANO)



FACHADA DESDE CARRETERA



ESCALA:

## South Bay 506

\$630,557.00 USD

South Bay | 65 # Units in Develop | Emiliano Zapata  
Centro South, Puerto Vallarta  
MLS ID: 39427

### General Information

Total m2:	83	Total M2 const:	83.93
Total SqFt:	903.08	Walls:	Concrete,Sheetrock
Price/Sq Meter:	7,512.89	Total Bedrooms:	1
Total Baths:	2	Full baths:	2
Floor Number:	Nivel 05	Primary View:	Ocean
Secondary View:	City	Furnished:	Unfurnished
Pet Friendly:	Yes	Parking:	Parking on Property
Location:	City		

### Features & Amenities

#### Common Amenities

24 Hours Security:		Elevator:	
Fire Pit:		Garden:	
Gym:		Intercom:	
Jacuzzi:		Pool:	
Appliances		Refrigerator/Freezer:	
Hood/Vent:		Cook Top:	Electric
Oven:	Electric	Water Heater:	Electric
Devices			
Air Conditioning:	Mini-Split		

### Hoa Info

Hoa Name:		Dues per month (\$MX):	8,939.00
24-hr Security:		Building Insurance:	
Common Area Electric:		Common Area Maintenance:	
Garden Maintenance:		Gym:	
On-Site Admin:		Pool Maintenance:	

### Especifications

Days On Market	304	Year Buit	2026
Pre-Construction	Yes	Est. Delivery Date	2027-02-10
Construction Manifest	No	Title	Escritura,Fideicomiso
Electricity	CFE	Water	City
Sewage	City	Road Type	Paved