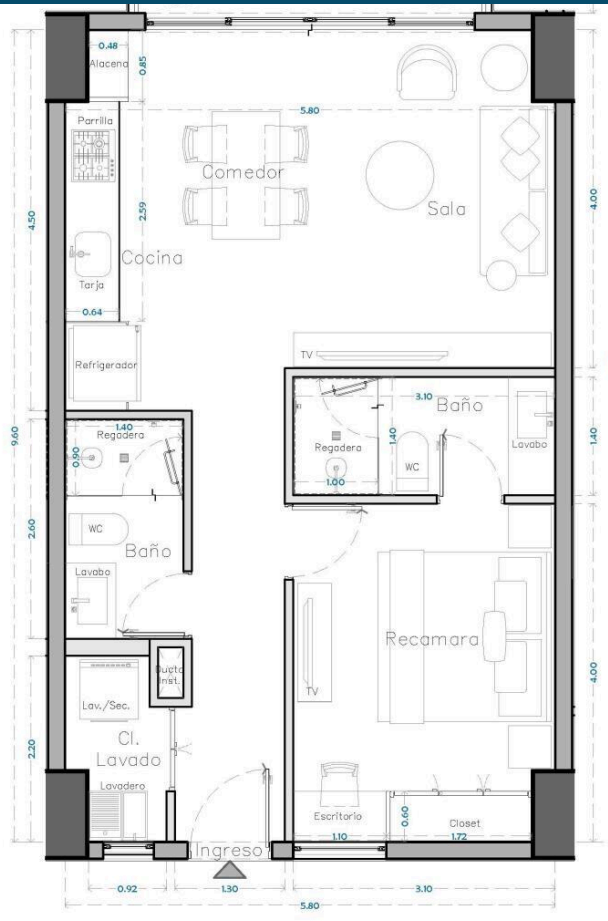


## U-503 SUPERFICIES

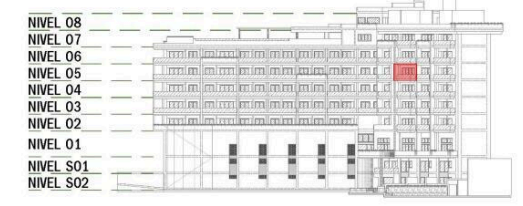
M2 INTERIORES : 60.00 M2

M2 EXTERIORES : 6.54 M2

M2 TOTALES : 66.54 M2



### FACHADA NORTE (OCEANO)



### FACHADA DESDE CARRETERA



ESCALA:

## South Bay 503

\$499,789.00 USD

South Bay | 65 # Units in Develop | Emiliano Zapata  
Centro South, Puerto Vallarta  
MLS ID: 39424

## General Information

Total m2:	66	Total M2 const:	66.59
Total SqFt:	716.50	Walls:	Concrete,Sheetrock
Price/Sq Meter:	7,505.47	Total Bedrooms:	1
Total Baths:	2	Full baths:	2
Floor Number:	Nivel 05	Primary View:	Ocean
Secondary View:	City	Furnished:	Unfurnished
Pet Friendly:	Yes	Parking:	Parking on Property
Location:	City		

## Features & Amenities

### Common Amenities

24 Hours Security:

Fire Pit:

Gym:

Jacuzzi:

### Appliances

Hood/Vent:

Oven: Electric

### Devices

Air Conditioning: Mini-Split

Elevator:

Garden:

Intercom:

Pool:

Refrigerator/Freezer:

Cook Top: Electric

Water Heater: Electric

## Hoa Info

Hoa Name:	Dues per month (\$MX):	7,092.00
24-hr Security:	Building Insurance:	
Common Area Electric:	Common Area Maintenance:	
Garden Maintenance:	Gym:	
On-Site Admin:	Pool Maintenance:	

## Especifications

Days On Market	304	Year Built	2026
Pre-Construction	Yes	Est. Delivery Date	2027-02-10
Construction Manifest	No	Title	Escritura,Fideicomiso
Electricity	CFE	Water	City
Sewage	City	Road Type	Paved